



GenesisMaxim Equipment Monitoring and Control System

OSHA Compliance & Safety Built In

All **GenesisMaxim** software and controls are housed in a low-voltage compartment in the top of the cabinet, while a separate compartment at the bottom of the cabinet houses electrical components. This allows operators to gain safe, easy access to controls for troubleshooting live automation without the need for personal protective equipment or lockout/tagout. Meanwhile, the electrical compartment remains locked and requires system shutdown and lockout/tagout for entry. This design complies with OSHA requirements for operational safety.

Simplified Coding, No Schematics, Minimal Engineering

The I/O coding of the **GenesisMaxim** translates to the standard resistor color code, and the coding matches the PLC tags. This unique numbering system enables fast setup. It also easily directs an operator from a device to its corresponding active line of code within the controls software, thereby simplifying the location, connection, and troubleshooting of any I/O.

Safe, Secure Data Access

The PC component of the **GenesisMaxim** displays process data screens, logs and manages data, and securely delivers process information to authorized personnel from any location via an internet-ready device. The PC is equipped with two (2) ethernet cards and a dedicated IP address that limits communication to one-way, out-only data streaming, so process data is secure.

Remote Troubleshooting

The cyber-secure internet communication of the **GenesisMaxim** can allow both in-house operators and OEE Datawatch support personnel to remotely troubleshoot and service the system from anywhere with an internet-enabled device. This capability minimizes system downtime and gets production back up and running in a fraction of the time required by traditional automation systems that are burdened with propriety components and require specialized expertise for maintenance and repair.

The Efficiency of Standardization

All OEE DataWatch systems use standard hardware and software components and an internal configuration that are consistent from one unit to the next. This standardization streamlines the process of setting up, operating, and maintaining multiple units across the plant floor. It also relieves manufacturers of the burden of supporting a wide range of different control systems, technologies, and components.

Complete Start-to-Finish Support

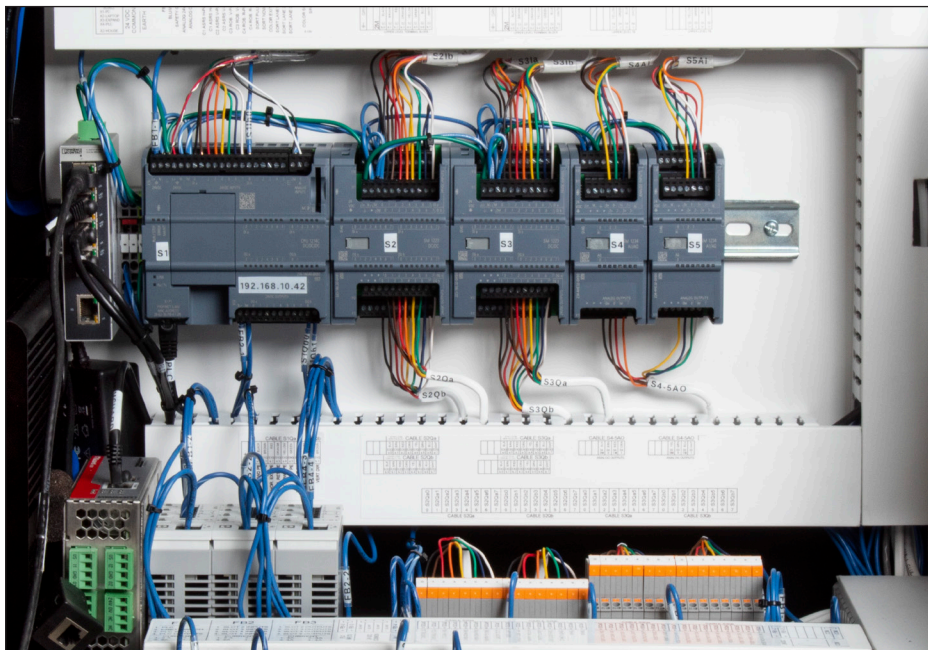
OEE Datawatch supports every automation project from initial quote and programming through installation and automation on the factory floor. Support includes free access to OEE's growing library of online training tutorials that are designed to place owners and operators in complete control of their automation system. OEE engineers are also available after delivery to assist with unit setup, maintenance, and troubleshooting.

Specifications:

- PLC: Siemens S71200 Series (Allen-Bradley or other upon request)
- PC: I7 processor with SSD with 19" touchscreen monitor
- OS: Windows 10
- Siemens TIA Portal Software (Programming license included)
- SCADA: AVEVA (Wonderware) Indusoft Web Studio (Runtime license included)
- 32 inputs/32 outputs, 8 analog inputs, 4 analog outputs and 4 high-speed counter inputs
- Remote 40" HDMI monitor for ANDON data display - 25' cable included
- Manual operating data screen and OEE dashboard with trending included
- SIL 3 E-stop
- Wireless keyboard and mouse
- Wi-Fi enabled
- Solid-state fuses (programmable 1 to 10 amps)
- One-year warranty

Features:

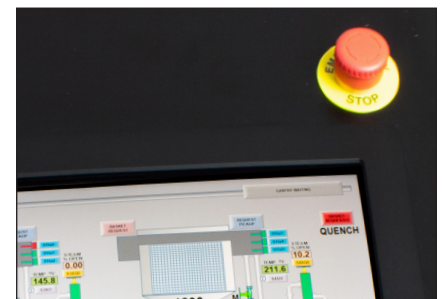
- Movable interior light strip provides handy light source to clearly view all areas inside the cabinet
- Convenient interior power strip with surge protection safeguards PC operations
- Fan with temperature sensor monitors and dissipates heat in lower electrical compartment
- Industrial wheels allow cabinet to easily roll onto the factory floor to desired location
- Wheels can be replaced with legs that can be bolted to the floor for permanent placement
- Ergonomic cabinet height for added comfort, ease of use
- Shelf for keyboard and mouse



I/O coding translates to standard resistor color code.



19" touchscreen display



SIL E-stop